

SHOSHONE - BANNOCK FIRE STATION

DESIGN DEVELOPMENT

06-03-2019



PROJECT TEAM

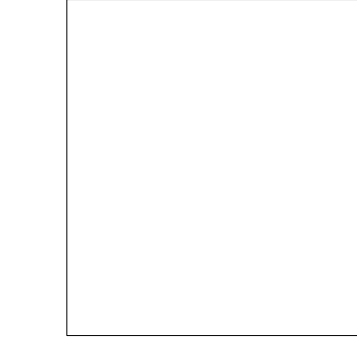
PROJECT ARCHITECT
FFKR ARCHITECTS
730 PACIFIC AVENUE
SALT LAKE CITY, UT 84104
801.521.6186



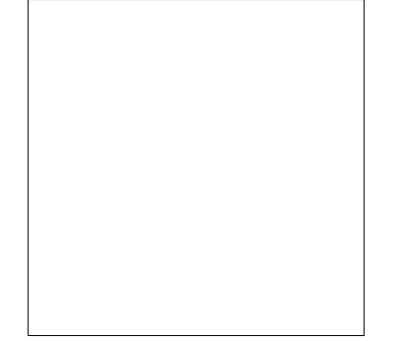
CIVIL ENGINEER

SEPARATE SET.
FOR
REFERENCE
ONLY.

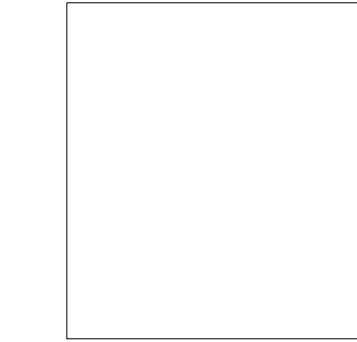
STRUCTURAL ENGINEER



LANDSCAPE ARCHITECT



MEP & AV ENGINEER



MATERIAL LEGEND

- GYPSUM BOARD OR CONCRETE SURFACE
- CONCRETE
- STUD WALL
- BRICK
- GRAVEL
- COMPACTED FILL AND/OR EARTH
- CMU
- BATT INSULATION
- RIGID INSULATION

SYMBOLS LEGEND

- ROOM IDENTIFICATION NUMBER: ROOM NAME, ROOM NUMBER
- DOOR NUMBER: XXX
- REFERENCE NOTE: XXXX
- GLAZING TYPE: X
- PARTITION WALL TYPE: XX
- INTERIOR ELEVATION: A1, A2, A3 (Shade indicates elevated wall, Elevation number, Sheet number)
- BUILDING SECTION: SECTION NUMBER, SHEET NUMBER
- WALL SECTION: SECTION NUMBER, SHEET NUMBER
- EXTERIOR ELEVATION: ELEVATION NUMBER, SHEET NUMBER
- DETAIL: DETAIL NUMBER, SHEET NUMBER
- DETAIL TITLE: A1 DETAIL SCALE
- REVISION DELTA: REVISION NUMBER

SITE MAP



VICINITY MAP



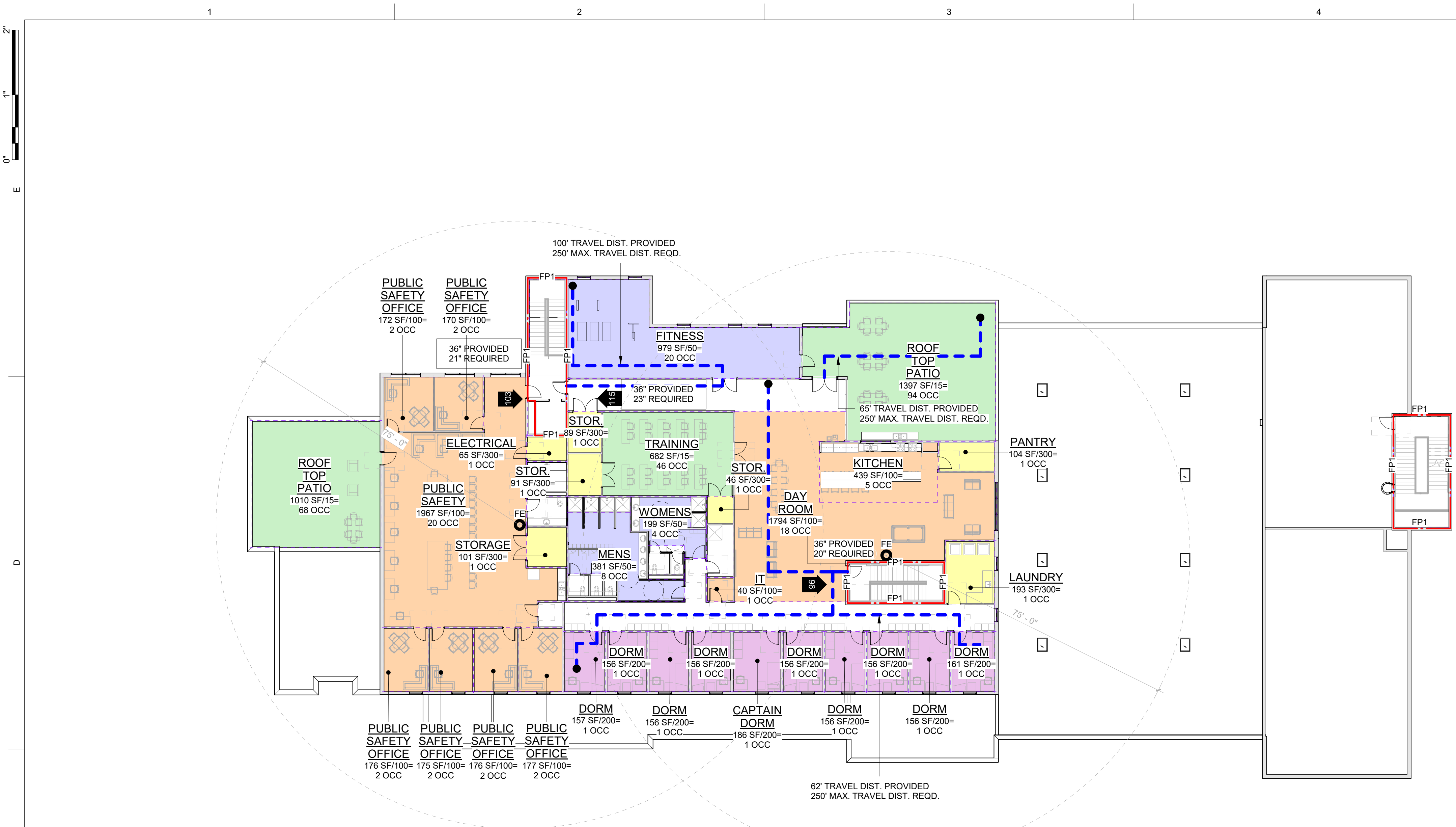
DRAWING INDEX

NOTE: ALSO SEE ASSOCIATED DETAIL MANUAL

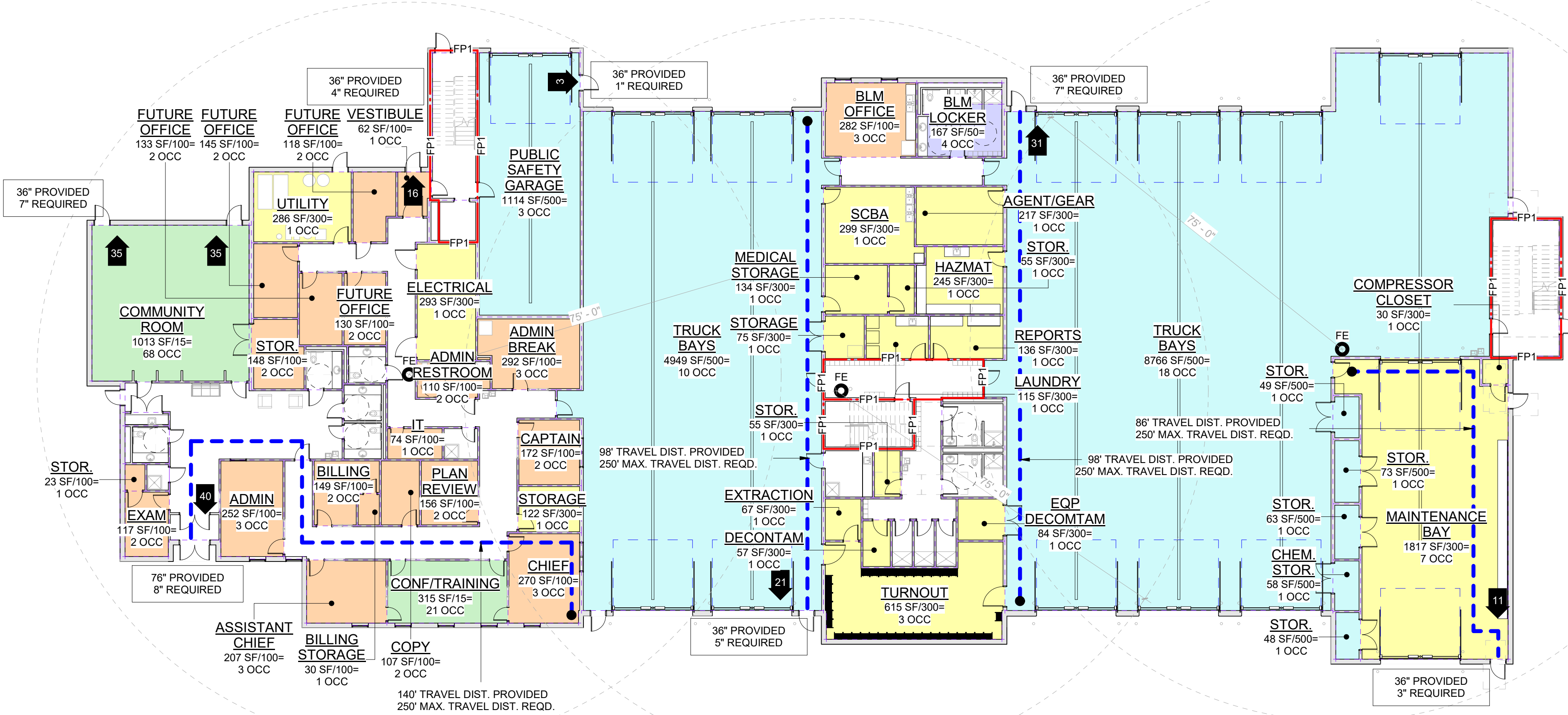
SHEET NO.	SHEET NAME
A203	EXTERIOR ELEVATIONS REALISTIC
A414	ELEVATOR PLANS AND SECTIONS
A504	DOOR @ CMU DETAILS
A505	DOOR @ STUD & AP DETAILS
GENERAL INFORMATION	
G000	COVER SHEET
G001	LEVEL 1 & 2 LIFE SAFETY PLAN & CODE ANALYSIS
G003	THERMAL EFFICIENCY
G004	PROPOSED SITE PLAN
ARCHITECTURAL	
A101	LEVEL 1 OVERALL PLAN
A101.1	LEVEL 1 AREA A
A101.2	LEVEL 1 AREA B
A102	LEVEL 2 OVERALL PLAN
A102.1	LEVEL 2 AREA A
A102.2	LEVEL 2 AREA B
A103	ROOF PLAN
A111	RCP LEVEL 1
A111.1	RCP LEVEL 1 AREA A
A111.2	RCP LEVEL 1 AREA B
A112	RCP LEVEL 2
A112.1	RCP LEVEL 2 AREA A
A112.2	RCP LEVEL 2 AREA B
A200	EXTERIOR ELEVATIONS
A201	PARTIAL EXTERIOR ELEVATIONS
A202	ENLARGED EXTERIOR ELEVATIONS
A300	BUILDING SECTIONS
A302	WALL SECTIONS
A303	WALL SECTIONS
A401	ENLARGED BATHROOM LEVEL 1 - PLANS & ELEVATIONS
A402	ENLARGED BATHROOM LEVEL 1 - PLANS & ELEVATIONS
A403	ENLARGED BATHROOM LEVEL 2 - PLANS & ELEVATIONS
A404	ENLARGED KITCHEN & BATHROOM LEVEL 2 - PLANS & ELEVATIONS
A411	STAIR 1 ENLARGED
A412	STAIR 2 ENLARGED
A413	TRAINING STAIR ENLARGED
A421	BUILDING ENLARGED
A501	WINDOW DETAILS
A502	SECTIONS DETAILS
A503	ROOF DETAILS
A601	PARTITION TYPES
A602	WINDOW SCHEDULE
A603	DOOR SCHEDULE
A604	FINISH SCHEDULE
A700	INTERIOR ELEVATIONS
AF101	FINISH FLOOR LEVEL 1
AF102	FINISH FLOOR LEVEL 2

ABBREVIATIONS

AFF	ABOVE FINISH FLOOR	O.C.	ON CENTER
CMU	CONCRETE MASONRY UNIT	SPEC	SPECIFICATION
EIFS	EXTERIOR INSULATED FINISH	SIM	SIMILAR
EQ	EQUAL	TYP	TYPICAL
MAX	MAXIMUM	T.O.	TOP OF
MIN	MINIMUM	B.O.	BOTTOM OF
NIC	NOT IN CONTRACT		



D1 LEVEL 2 LIFE SAFETY PLAN
SCALE: 1/16" = 1'-0"



A1 LEVEL 1 LIFE SAFETY PLAN
SCALE: 1/16" = 1'-0"

FFKR ARCHITECTS SHOSHONE - FIRE STATION

BASIC IBC 2015 CODE ANALYSIS

APPLICABLE CODES	Year	Code Name	Year
International Building Code (IBC)	2015	International Energy Conservation Code (IECC)	2015
International Mechanical Code (IMC)	2015	National Electrical Code (NEC)	2017
International Plumbing Code (IPC)	2015	International Existing Building Code	2015
International Fire Code (IFC)	2015	ADA Accessibility Guidelines (ADAAG)	2010

BUILDING OCCUPANCY & CONSTRUCTION TYPE

Occupancy of Building	Multi	Separated Occupancies	Table 508.4
Primary Occupancy	S-2	Construction Type II-B	Sect 602

Any Special Use & Occupancies Chapter 4

Building Occupancies change in Use?	S-1,S-2,B-A-3,R-3	NO
Is the building fire sprinkled?	YES	Type: NFPA 13
Seismic Design Category	D	
Wind Speed	90	MPH
Design Building Area	47276	SF
Design building height (stories)	2	Stories
Design building height (Ft)	32	Ft

Allowed Building Area	102600	Sect. 506.1 per Equation 5-1
Allowed Building Height (Stories)	2	Verify provisions of Sections 508.2.2 & 508.2.3
Allowed Building Height (Ft)	75	

Building Square Footage	Area	Occupied (Y/N)	Basement?
LEVEL 1	31245 SF	Yes	Sect. 506.1.3
LEVEL 2	13824 SF	Yes	
Total	45070 SF		

REFERENCE NOTES

BUILDING OVERALL SQUARE FOOTAGE:	
LEVEL 1	29,573.46 SF
LEVEL 2	14,576.32 SF
TOTAL	44,149.78 SF

NOTE

406.3.4.1 Dwelling unit separation (IBC)
The private garage shall be separated from the dwelling unit and its attic area by means of gypsum board, not less than 1/2 inch (12.7 mm) in thickness, applied to the garage side. Garages beneath habitable rooms shall be separated from all habitable rooms above by not less than a 5/8-inch (15.9 mm) Type X gypsum board or equivalent and 1/2-inch (12.7 mm) gypsum board applied to structures supporting the separation from habitable rooms above the garage.

LEGEND

FB1 RATED WALL ASSEMBLY CODE

CODE DESCRIPTION
FP FIRE PARTITION

NON-RATED WALL ASSEMBLY

COMMON PATH OF EGRESS

ONE HOUR FIRE RATED
TWO HOUR FIRE RATED

LIFE SAFETY ARROW

NUMBER OF OCCUPANTS

FIRE EXTINGUISHER

FIRE EXTINGUISHER TRAVEL DISTANCE

TYPICAL WALLS

FUTURE WALLS

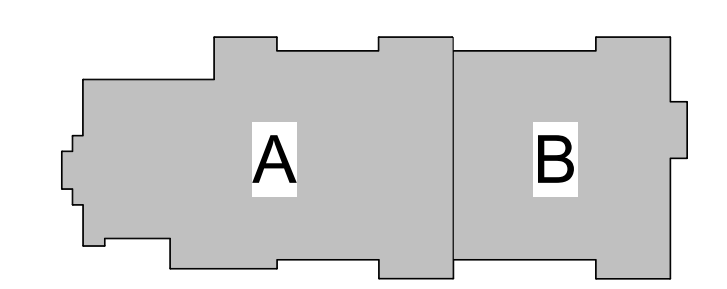
TEMPORARY WALLS

OCCUPANCY TYPES

OCCUPANCY AREA BOUNDARY

- ACCESSORY STORAGE O.F. = 300
- BUSINESS AREAS O.F. = 100
- RESIDENTIAL O.F. = 200
- ASSEMBLY UNCONCENTRATED (TABLE & CHAIRS) O.F. = 15
- WAREHOUSE O.F. = 500
- EXERCISE ROOM O.F. = 300

KEY PLAN



PROJECT NORTH TRUE NORTH

Area Increases	Code	Requirement	Section
Unlimited Area Building?	No		Sect. 506 Equation 5-1
Allowable Area (Aa)	Aa		Section 507
Tabular Area (At)	At	SF	Mezzanine? See Sect 505
Frontage Increase (If)	If	%	Table 503
Perim. Public Way (F)	F	Ft	Sect 506.2 per Equation 5-2
Bldg Perimeter (P)	P	Ft	
Is Public Way a Constant Width		See Sect 506.3.2 equation 5-4	
Public Way Width (W)	W	Ft	Sect 506.2.1 if less than 20'

Building Height (Ft)	48 Ft	Sect. 504.3
Tabular Height		Table 504.3
Building Height (Stories)	2 Stories	Sect. 504.3
Tabular Height		Table 504.4

Fire Resistance Ratings for Building Elements (hours)			Table 601
Are Fire Sprinklers Required (See "Are Sprinklers Required" Tab)			Sect. 903.2
Building Element	Tabular	Notes	
Primary Structural Frame (See Section 202)	0	F	
Bearing Walls - Exterior	0	E,F	
Bearing Walls - Interior	0	-	
Nonbearing Walls & Partitions - Exterior	See Table 602	-	
Nonbearing Walls & Partitions - Interior	0	D	
Floor Construction (See Section 202)	0	-	
Roof Construction (See Section 202)	0	C	

Shaft Enclosure Fire Rating	1 Hours	Stories (Including Basements)	2	Section 713.4
Shaft Enclosure Fire Rating				

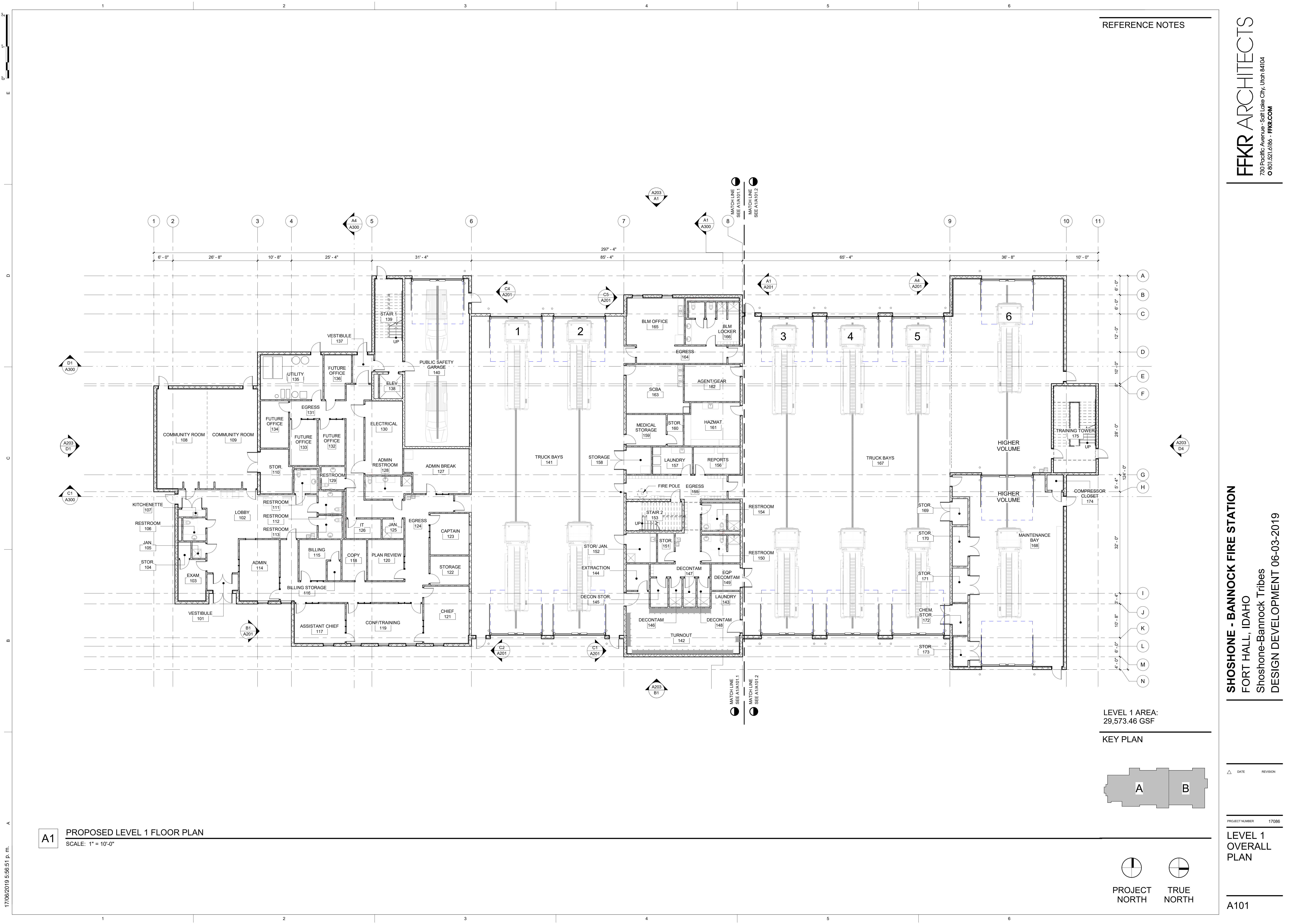
Exit Width		Exit Convergence? - See 105.6		Section 1005
Area / Floor	Occupants	Exit On Grade?	Factor from Sect. 1005.3.1	Stair Width Required
LEVEL 1	192	Yes	0.2 in	N/A in
LEVEL 2	317	No	0.2 in	63.4 in
Total Exit Width Required				100 in

Doors		Exit On Grade? - See 105.6		Section 1005.1
Area / Floor	Occupants	Factor from Sect. 1005.1	Door Width Required	Door Width Provided
LEVEL 1	192	0.15 in	28.8 in	364 in
LEVEL 2	317	0.15 in	47.55 in	108 in
Total Exit Width Required				

SHOSHONE - BANNOCK FIRE STATION
FORT HALL, IDAHO
 Shoshone-Bannock Tribes
 DESIGN DEVELOPMENT 06-03-2019

FFKR ARCHITECTS
 730 Pacific Avenue - Salt Lake City, Utah 84104
 © 801.521.6186 - FFKR.COM

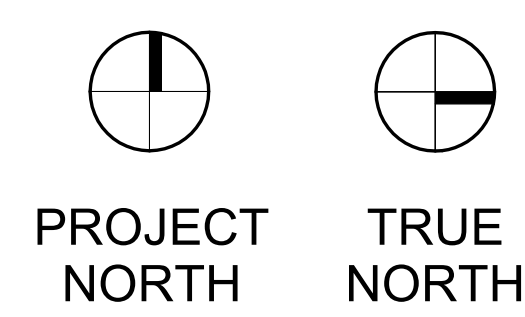
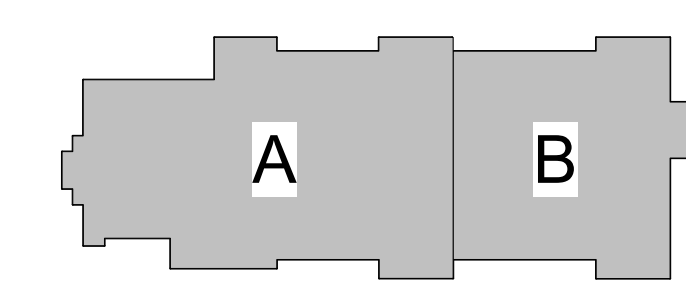
PROJECT NUMBER 17086
LEVEL 1 & 2 LIFE SAFETY PLAN & CODE ANALYSIS
 G001



REFERENCE NOTES

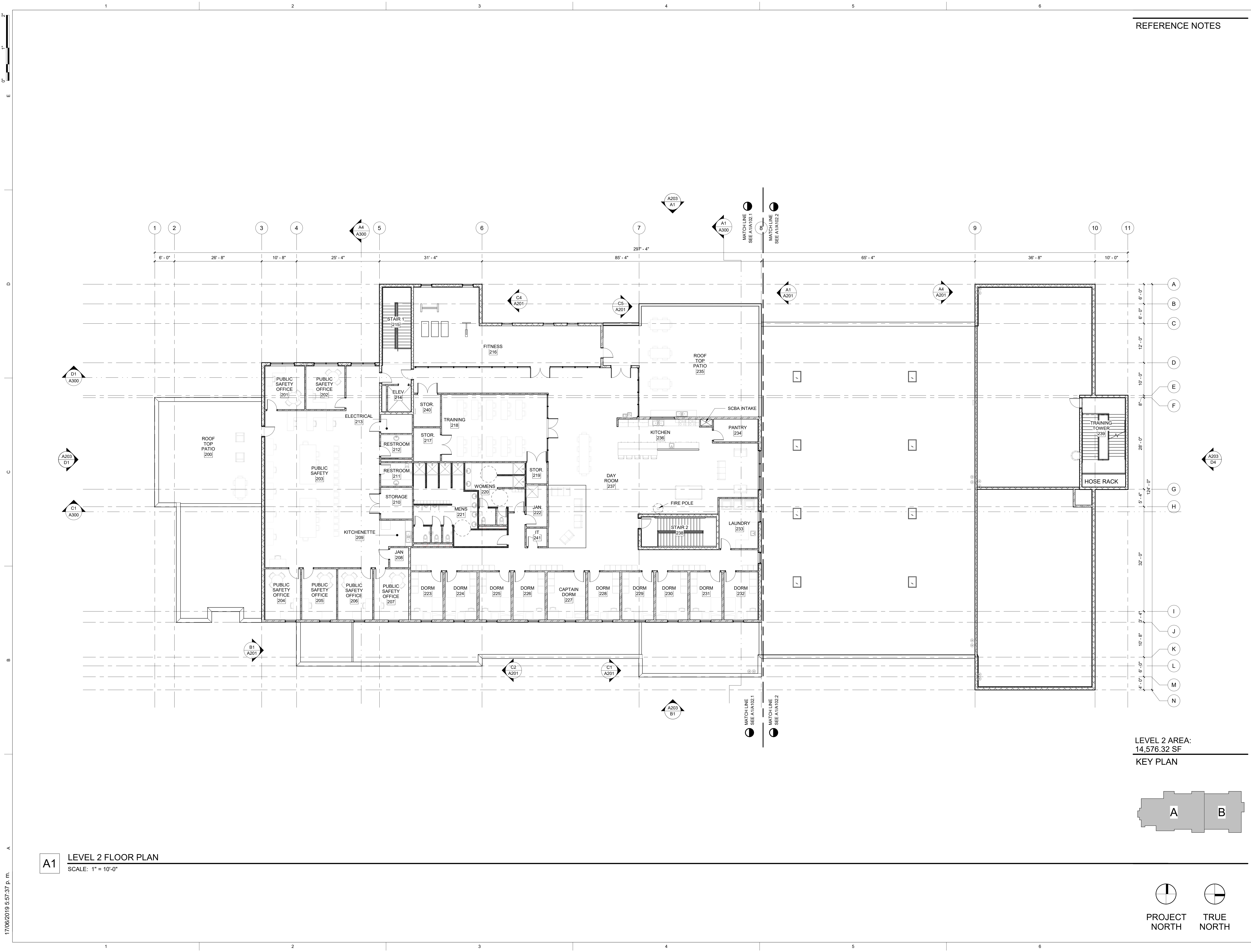
LEVEL 1 AREA:
29,573.46 GSF

KEY PLAN



A1 PROPOSED LEVEL 1 FLOOR PLAN
SCALE: 1" = 10'-0"

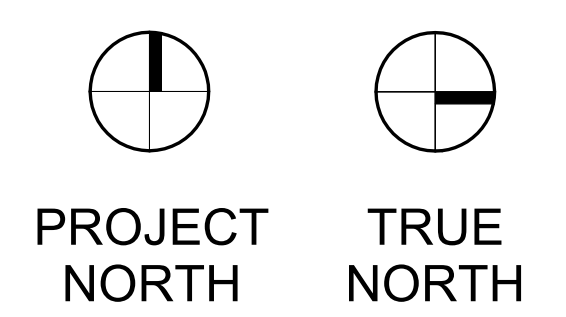
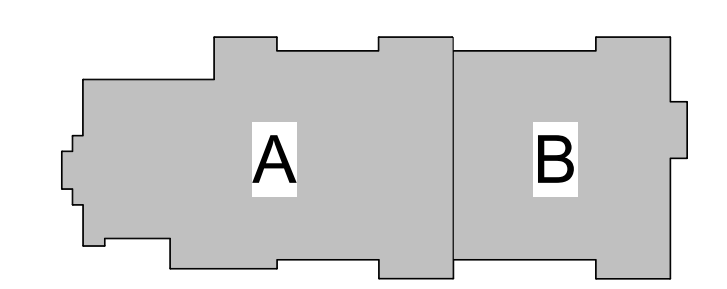
17/06/2019 5:56:51 p.m.



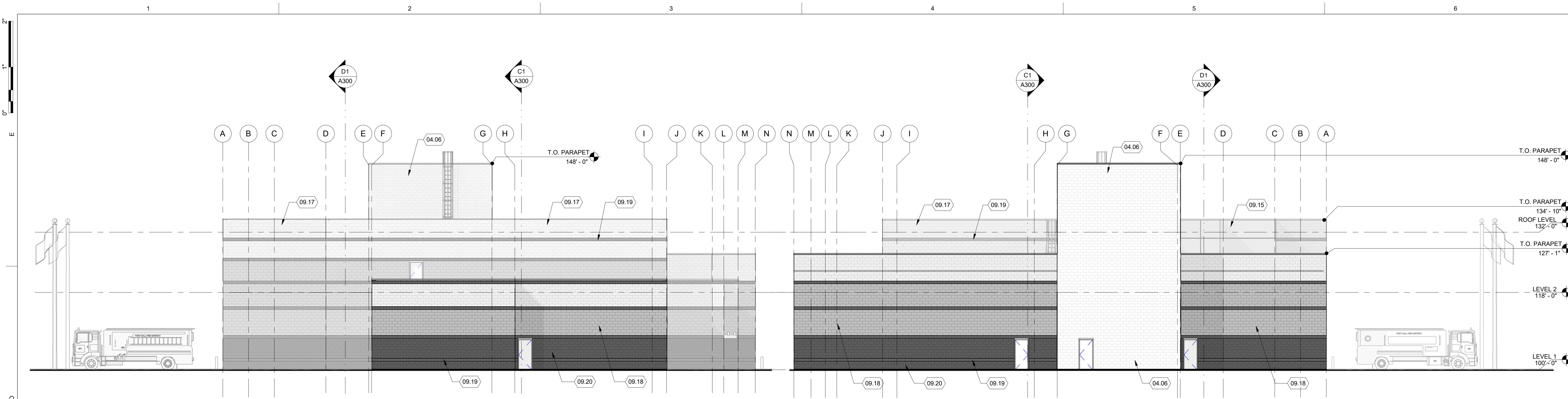
REFERENCE NOTES

A1 LEVEL 2 FLOOR PLAN
SCALE: 1" = 10'-0"

LEVEL 2 AREA:
14,576.32 SF
KEY PLAN

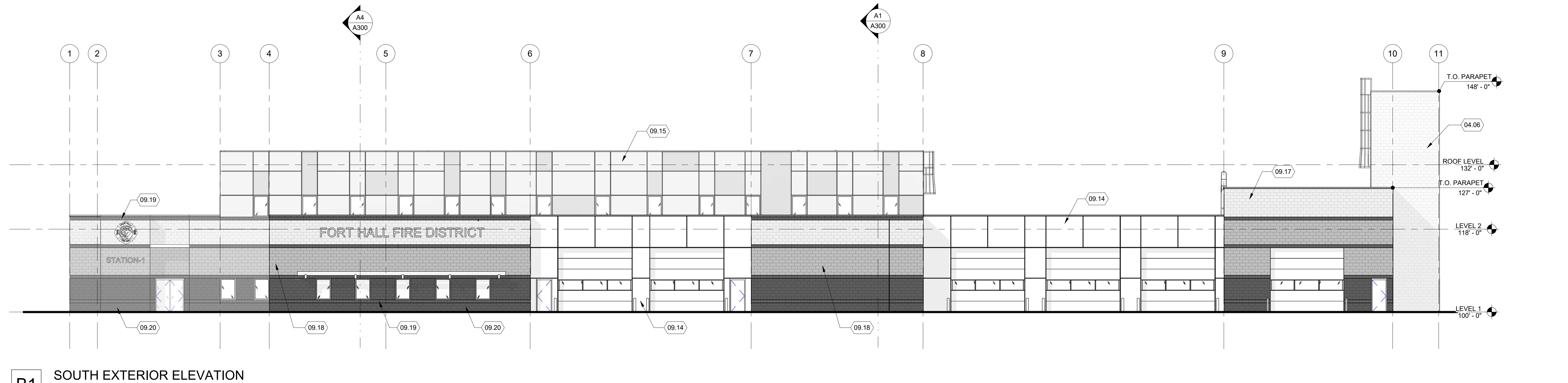


17/06/2019 5:57:37 p. m.

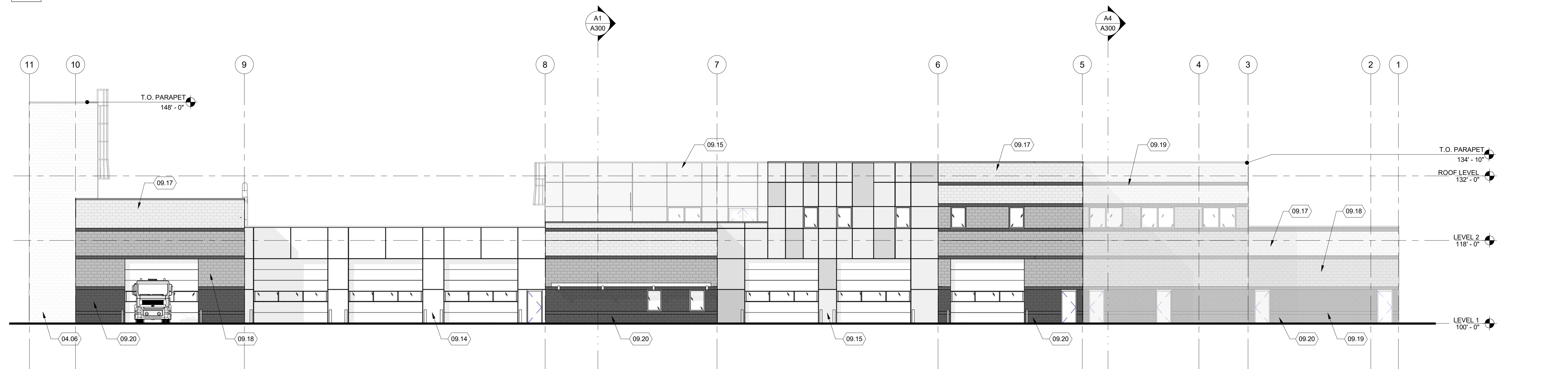


D1 WEST EXTERIOR ELEVATION
SCALE: 3/32" = 1'-0"

D4 EAST EXTERIOR ELEVATION
SCALE: 3/32" = 1'-0"



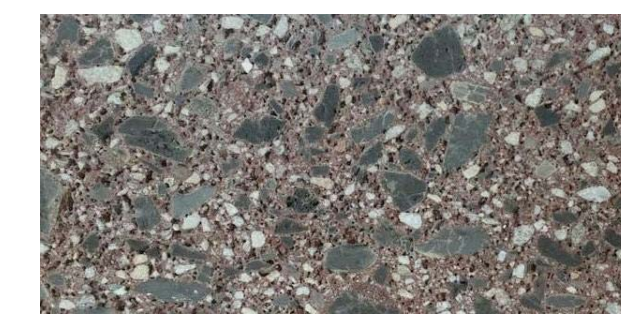
B1 SOUTH EXTERIOR ELEVATION
SCALE: 3/32" = 1'-0"



A1 NORTH EXTERIOR ELEVATION
SCALE: 3/32" = 1'-0"

REFERENCE NOTES

- 04.06 CHILI PEPPER CMU
- 09.14 ACM PANEL RUSTIC RED
- 09.15 ACM PANEL CHAMPANG
- 09.17 BISQUE
- 09.18 JAVA A STANDAR COLOR
- 09.19 CHARCOAL A STANDAR COLOR
- 09.20 EBONY A STANDAR COLOR



04.06



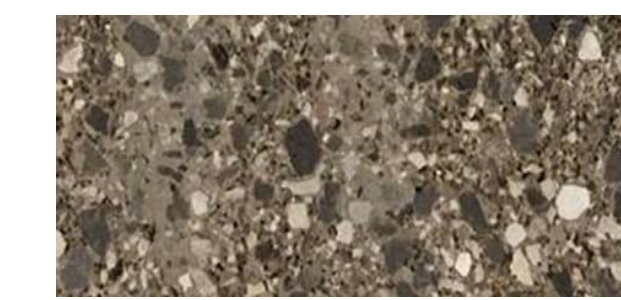
09.14



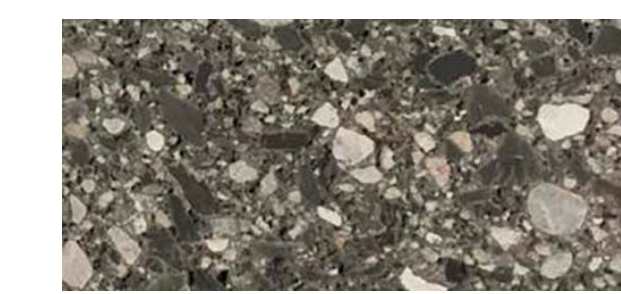
09.15



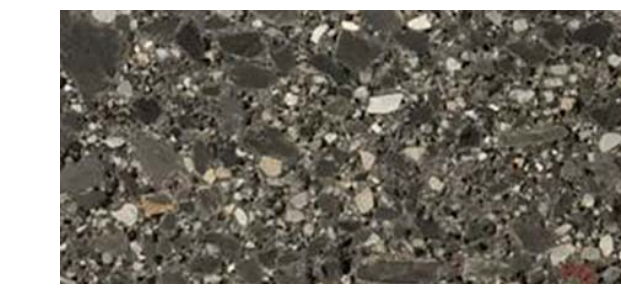
09.17



09.18



09.19

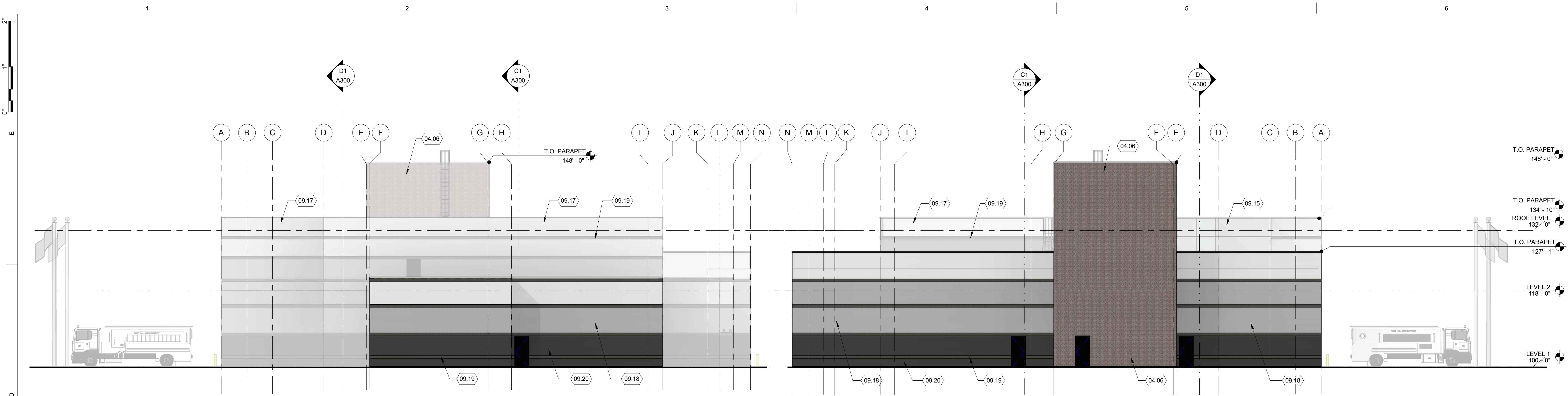


09.20

DATE	REVISION

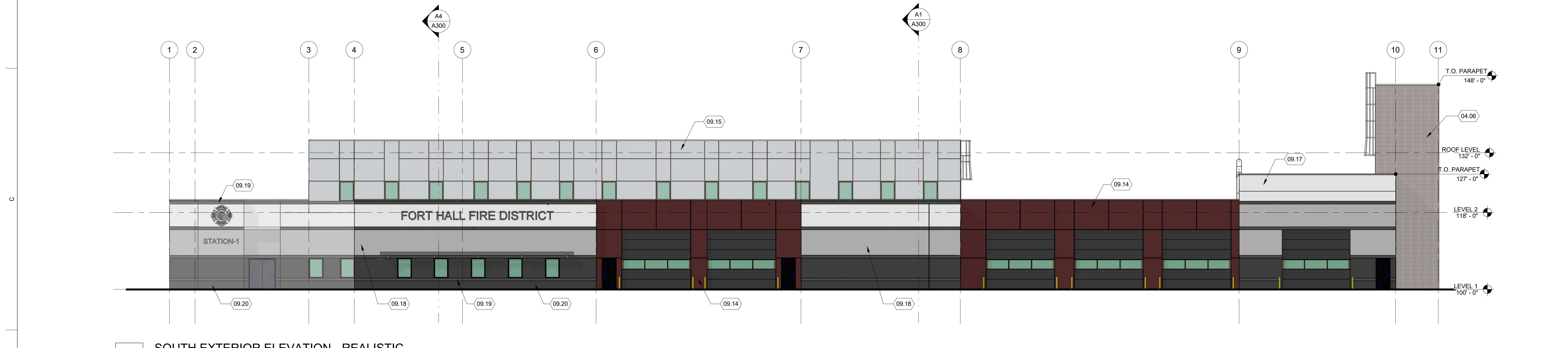
PROJECT NUMBER 17086

EXTERIOR ELEVATIONS

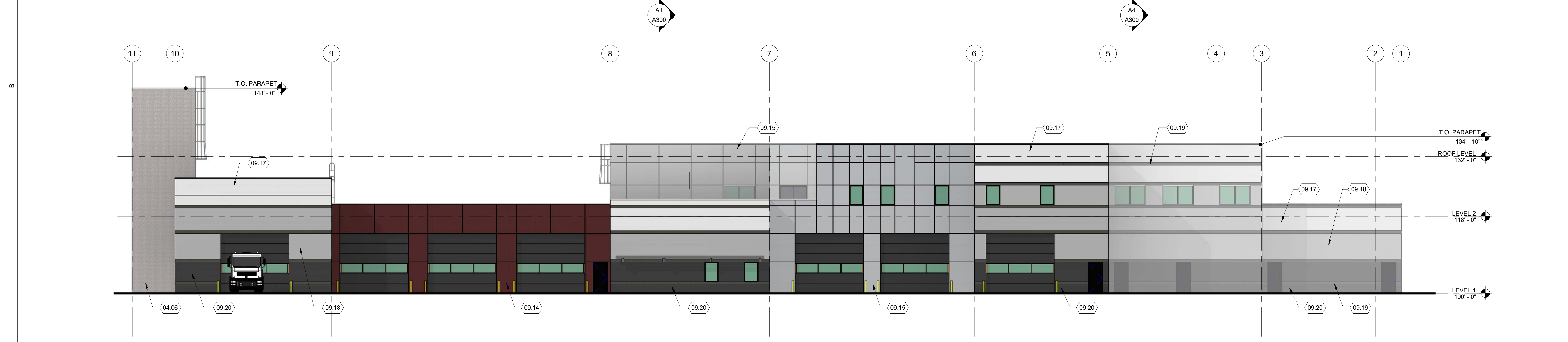


D1 WEST EXTERIOR ELEVATION - REALISTIC
SCALE: 3/32" = 1'-0"

D4 EAST EXTERIOR ELEVATION - REALISTIC
SCALE: 3/32" = 1'-0"



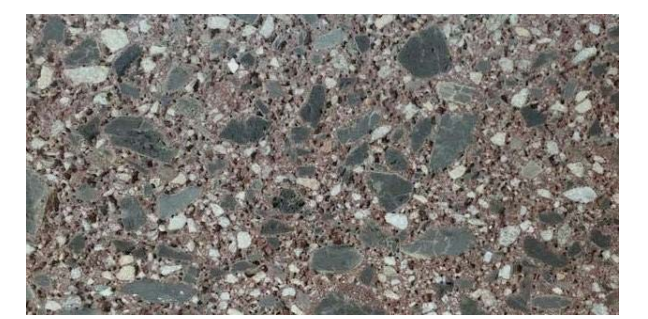
B1 SOUTH EXTERIOR ELEVATION - REALISTIC
SCALE: 3/32" = 1'-0"



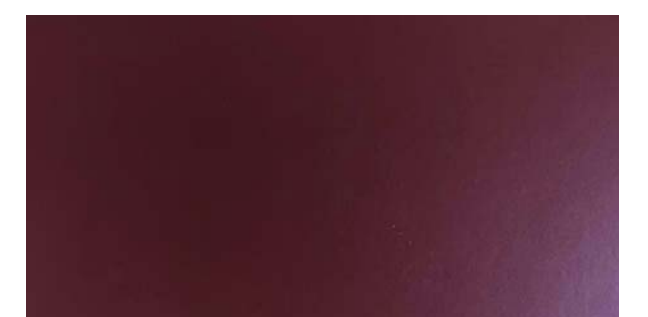
A1 NORTH EXTERIOR ELEVATION - REALISTIC
SCALE: 3/32" = 1'-0"

REFERENCE NOTES

- 04.06 CHILI PEPPER CMU
- 09.14 ACM PANEL RUSTIC RED
- 09.15 ACM PANEL CHAMPANG
- 09.17 BISQUE
- 09.18 JAVA A STANDAR COLOR
- 09.19 CHARCOAL A STANDAR COLOR
- 09.20 EBONY A STANDAR COLOR



04.06



09.14



09.15



09.17



09.18



09.19



09.20

DATE	REVISION

PROJECT NUMBER 17086

EXTERIOR ELEVATIONS REALISTIC

17/06/2019 6:01:39 p. m.